

Application consideration

Please keep the following points in mind:

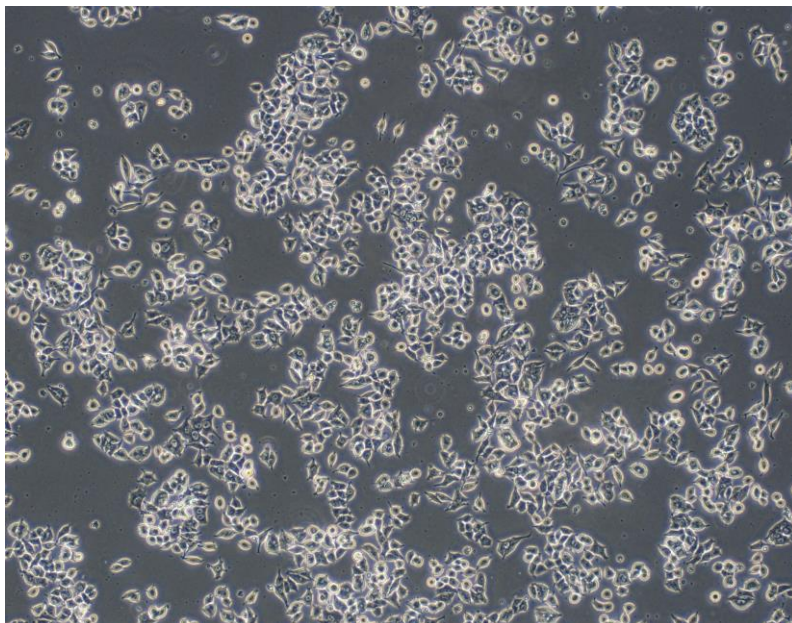
RCB0009:PC-12

- In some cases due to the quality of horse serum (HS),
the cells cannot attach to dishes.

Culture medium: DMEM (low glucose) + 10% FBS + 10% HS (GIBCO)

- In some cases due to the quality of HS, the cells cannot attach to dishes after thawing and they tend to float.

Our bank uses the medium GIBCO Cat#16050-130.



【Technical support】 e-mail : cellqa.brc@riken.jp