

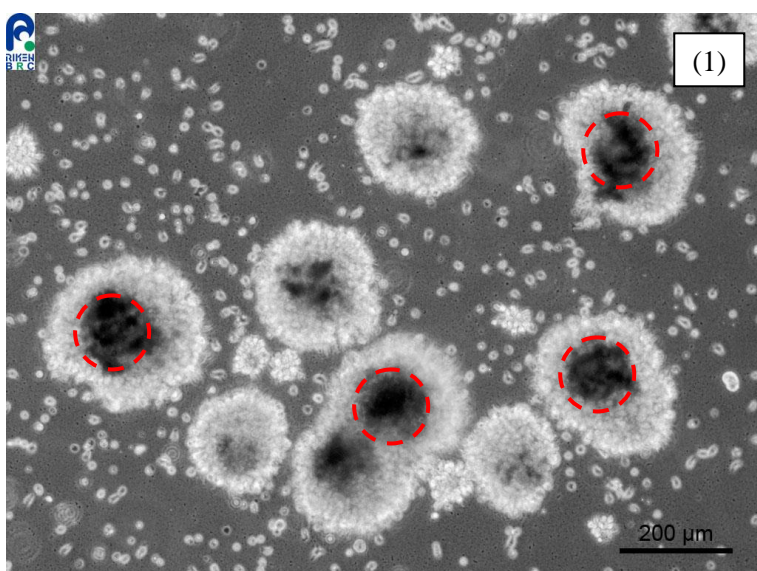
Application consideration

HEV0071

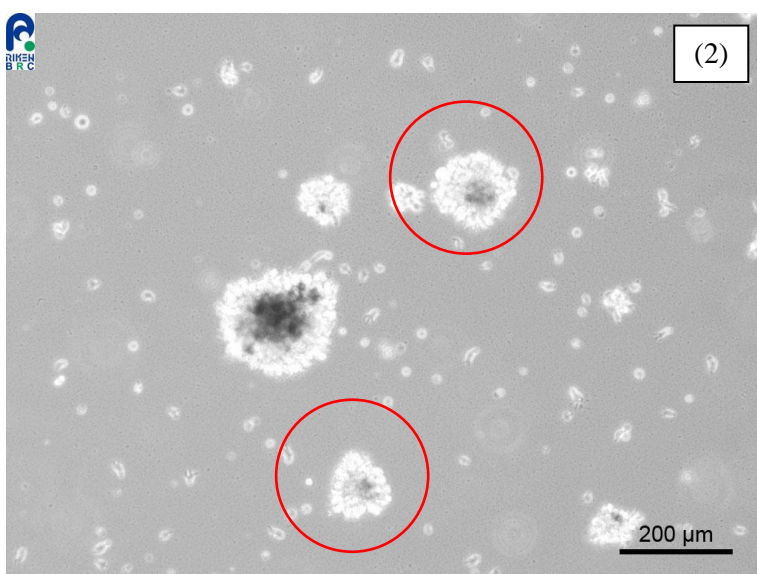
Please keep in mind the following points:

- This cell line grows slowly.
- The cells grow as an aggregated form.
- Please subculture the cells to segregate the large cluster of cells by gently pipping up and down and plate them.
- The cells grow as an aggregated form and the black central portion becomes visible.

(Please subculture these clusters by gently pipping up and down to attain the optimal size as shown in photo No.2)



(1)
The condition of the cells whilst growing into aggregated form. The black portions can be observed in the the centers of the cell clusters by the dotted red circles.



(2)
Optimal cell sizes for subculture shown by red circles.